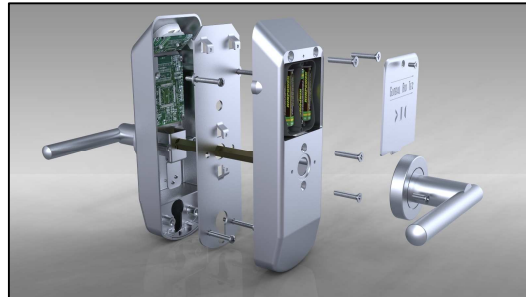


Press Release

28th September 2009

Global Bio Tec key free lock meets PAS 24 requirements

A new biometric fingerprint sensor lock developed by Global Bio Tec Ltd has been successfully tested on a doorset to PAS 24, by Chiltern Dynamics, with particular interest in the manual attack on the access control plate as a route to Secured by Design certification.



The Connective Touch lock from Global Bio Tec converts conventional internal mechanical locks into a stand-alone biometrically operated access control system. The company has designed and created unique software to combine mechanical function, electronic specification and biometric capabilities, working with Swedish specialists in this field Finger Print Cards.

Global Bio Tec Managing Director Devi Sohanta, who has steered both the product and the software through some four years of development, was impressed with the technical knowledge and support provided by Chiltern Dynamics throughout the PAS 24 testing process. 'We took on board all of the observations and thoughts Chiltern Dynamics offered following the initial testing and were then able to meet PAS 24 requirements when the lock was retested three months later.'

Ms Sohanta is an experienced businesswoman who works with national and local government to develop economic growth strategies for disadvantaged communities. 'The fingerprint sensor lock is aimed at market sectors such as social housing, residential care homes and health authorities, for example, where a key free lock would have a wide application both for ease of use and to enhance security.'

The Connective Touch lock is, she said, 'a strictly British product' and it will be manufactured in Britain. It is the only biometric product of this type. Now patented, the 'final piece in the jigsaw' was acceptance by Secured by Design, which thanks to the PAS 24 testing with Chiltern Dynamics has been approved. The Connective

Touch lock is now installed in pilot projects and will go into full production in November.

For further information on:

- Chiltern Dynamics security testing email pandrews@chilterndynamics.co.uk or visit www.chilterndynamics.co.uk
- Global Bio Tec email devi@globalbtec.com or visit www.globalbtec.com

ENDS