

DIARY

FDE 2012

TUESDAY 28 FEBRUARY
TUESDAY 17 APRIL
WEDNESDAY 27 JUNE
WEDNESDAY 19 SEPTEMBER
WEDNESDAY 17 OCTOBER
WEDNESDAY 21 NOVEMBER

FPBE 2012

THURSDAY 17 MAY
THURSDAY 4 OCTOBER

PROVINGTIMES

INVESTMENT IN THE FUTURE

Reducing carbon emissions and conserving energy are all important goals for the construction sector, reflected in this issue - Door Energy Ratings (page 4), the Green Deal (page 2) and a new agreement for the provision of energy assessment services with Buildbase (page 6). Training, too, remains vital to business, as the NHBC underlines (page 3). As the New Year beckons I am sure we will hear more about these critical issues in the months ahead.

Jon Osborn
Chief Operating Officer



UKAS SELECTS BM TRADA CERTIFICATION FOR GREEN DEAL PILOT

BM TRADA Certification has been selected to be part of a UKAS pilot programme to determine the requirements certification bodies will have to meet to become accredited to certify installers to eventual Green Deal scheme requirements. The Green Deal is a government initiative to make existing buildings more energy-efficient and will cover both domestic and commercial buildings. BM TRADA is seeking accreditation to certify installers of energy-efficient windows and doors.

[FULL STORY ON PAGE 2](#)



'FIRE DOORS EXPLAINED' MEETS NHBC TRAINING NEEDS

NHBC (National House-building Council), the UK's leading warranty provider and standards setting body for new build homes, has booked almost 50 places with Chiltern International Fire (CIF) for its Fire Doors Explained (FDE) training courses this year – and would not hesitate to recommend the course to other bodies.

[FULL STORY ON PAGE 3](#)



CHILTERN DYNAMICS PROVIDES FREE INFORMATION ON PART L CHANGES

With more housebuilders and developers feeling the impact of the 2010 revisions to Approved Document L (ADL), Chiltern Dynamics has introduced an easy to use comparison table highlighting the key differences between the 2010 and 2006 regulations.

[FULL STORY ON PAGE 4](#)

Keeping up STANDARDS



UKAS SELECTS BM TRADA CERTIFICATION FOR GREEN DEAL PILOT

BM TRADA Certification has been selected to be part of a UKAS pilot programme to determine the requirements certification bodies will have to meet to become accredited to certify installers to eventual Green Deal scheme requirements. The Green Deal is a government initiative to make existing buildings more energy-efficient and will cover both domestic and commercial buildings. BM TRADA is seeking accreditation to certify installers of energy-efficient windows and doors.

As Product Certification Manager Simon Beer explained, 'This is an important achievement for us. The pilot programme, which will cover a number of different Green Deal measures, was only open to a limited number of certification bodies and we had to demonstrate to UKAS that we had schemes and processes in place that could be translated into realistic Green Deal requirements.'

Within its application to UKAS, BM TRADA included the procedures for its Q-Mark Survey and Installation and Competent Persons Schemes. Simon added, 'although the requirements of the Green Deal have yet to be finalised, these two schemes collectively contain many of the elements we believe are likely to be required.'



BM TRADA has been working closely with the Double Glazing and Conservatory Ombudsman Scheme (DGCOS), its strategic partner in the Competent Persons Scheme, to run joint seminars explaining the principles behind the Green Deal and the potential impact on installers. 'As a result, a number of companies have already expressed a commitment to undertaking a certification process with us,' Simon added.

The timescales are very short, as the Green Deal is expected to go live in October 2012. Because of UKAS' involvement, the requirements are likely to be strict, with no concessions.

For more information email sbeer@bmtrada.com.



JON OSBORN TAKES ON WIDER GROUP ROLE

Jon Osborn, Chief Operating Officer (COO) of Chiltern International Fire (CIF), will extend his role to cover sister company TRADA Technology. As part of the BM TRADA Group, the two companies work closely together and have an obvious synergy, with both providing UKAS-accredited testing and consultancy.

Jon joined CIF in 1996, an environmental toxicologist with a degree in Applied Biosciences. He started as a test technician, developing knowledge of all areas of testing and consultancy and after a period as both Technical Manager and General Manager, was appointed COO in 2007. He now represents CIF on various national and international technical committees, mainly in fire safety.

Commenting on his new role he said, 'Across the group we have considerable expertise in the construction sector. Although catering for different product ranges, all BM TRADA Group companies have the same ethos and aim to build a consistent customer experience. Common processes across the group aim to look after the best interests of the customer, while information can easily be shared between the two businesses because they are in house.'

For more information contact josborn@chilternfire.co.uk.



'FIRE DOORS EXPLAINED' MEETS NHBC TRAINING NEEDS

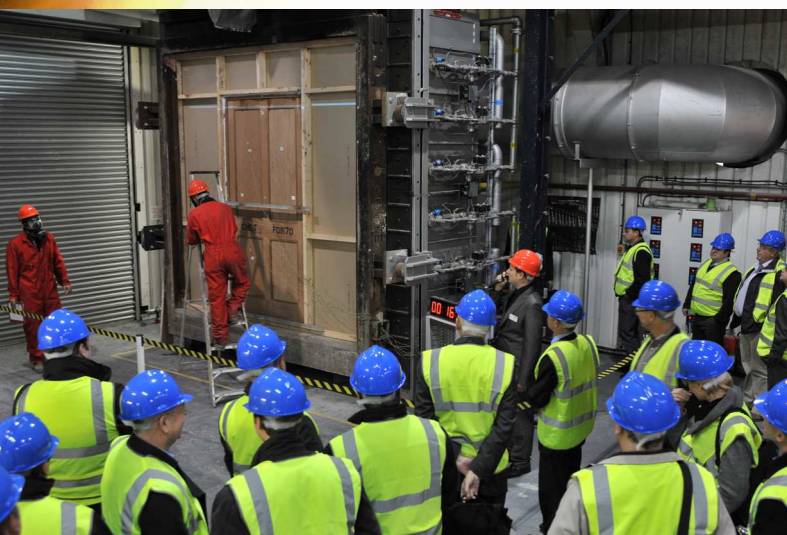
NHBC (National House-building Council), the UK's leading warranty provider and standards setting body for new build homes, has booked almost 50 places with Chiltern International Fire (CIF) for its Fire Doors Explained (FDE) training courses this year – and would not hesitate to recommend the course to other bodies.

Manager of NHBC's Technical Services Academy, Neil Herries said, 'Our Building Inspectors take fire safety very seriously and need to have the practical knowledge to be decisive when carrying out inspections on new homes under construction. This type of training raises their awareness of any issues with fire doors, enabling them to put the safety of homeowners at the top of our agenda.'

FDE was recommended to NHBC several years ago, he added. 'We have found that CIF's training objectives synchronise very well with our training needs and the feedback from our Inspectors is always very positive. The training is delivered in a very practical, hands on style and this works well for us.'

Neil continued, 'I have recommended Fire Doors Explained to other organisations. Almost without exception, our Building Inspectors who attend this course find it comprehensive, practical and informative and of great benefit to them in their day to day role.'

The CPD-certified seminar expanded this year to cover steel, composite and timber fire doors and 2011 has seen a record number of enquiries and advance bookings.



FDE dates for 2012 are: 28 February, 17 April, 27 June, 19 September, 17 October and 21 November. The cost is £310 + VAT (standard) with a discounted rate of £275 + VAT for TRADA and BM TRADA Q-Mark members.

Book online at www.chilternfire.co.uk/training.



£26K INVESTMENT IN COMPARTMENT FIRE BEHAVIOUR TRAINING FACILITY

Chiltern International Fire (CIF) has invested more than £26,000 in its Compartment Fire Behaviour Training facility, as part of an ongoing improvement programme.

As Head of Section Fire Behaviour Philip Howard explained, 'These boxes are subjected to hefty wear and tear. This year alone the training facility has been in use for 100 days or more and that will increase in 2012. It is absolutely essential that we maintain the facility to the high standards clients expect from us.' The CFBT demo and attack units are used for teaching students how to control fires within a compartment using gas cooling techniques.

The facility has been in virtually constant use since its launch five years ago. CIF aims to create conditions as close to 'real life' as possible. Philip added, 'There is no doubt that the most effective training for facing a real fire is to use real fire and that is why our training facility has proved so effective.'

The facility includes a training room for presentations and debriefings. Other key features include:

- Multi storey BA complex
- Residential Fire Facility
- Shower rooms
- Temperature monitoring within facilities
- Technical support from the Fire Behaviour team.

For further information email phoward@chilternfire.co.uk.



CHILTERN DYNAMICS FREE INFORMATION ON PART L CHANGES

With more housebuilders and developers feeling the impact of the 2010 revisions to Approved Document L (ADL), Chiltern Dynamics has introduced an easy to use comparison table highlighting the key differences between the 2010 and 2006 regulations.

Head of Energy Services Tom Gregory said, 'We are starting to see an increase in the volume of testing. The 2010 requirements mean not only more tests per development, but also a requirement for much better results than in the past. Good air tightness performance is an excellent and cost-effective energy saving measure and many of our clients are clearly aiming to improve on the minimum performance level required by Part L.'

Chiltern Dynamics has collated clear and concise information about the changes and their implications for clients, including free Technical Information Sheets and the new comparison table, both of which can be obtained from cd@chilterndynamics.co.uk.

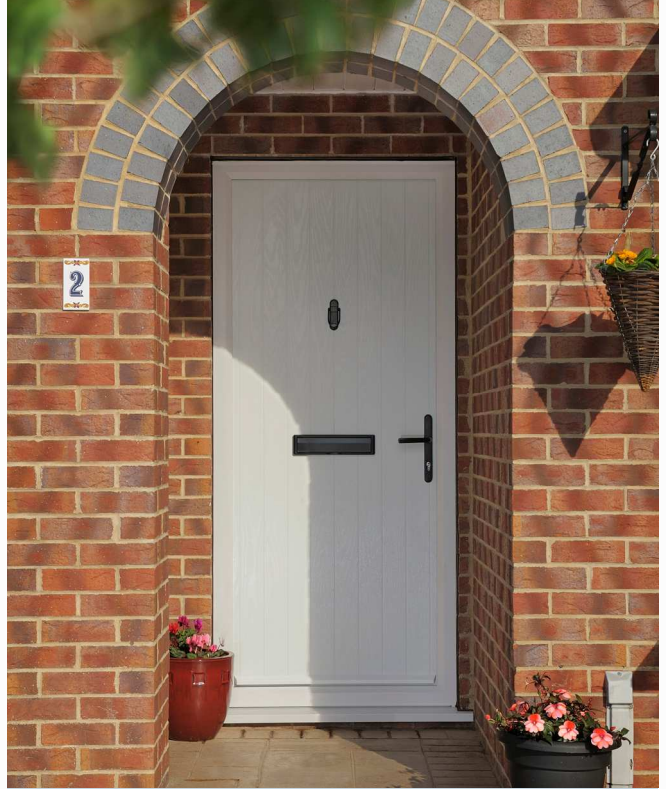
Chiltern Dynamics has also run a successful series of free webinars on air tightness testing this year and has set dates for 2012: 31st January, 15th February, 13th March and 9th May – see www.chilternfire.co.uk/training for more information.

For more information on air tightness testing, email gtomic@chilterndynamics.co.uk.

CHILTERN DYNAMICS TO EXPAND ENERGY SERVICE OFFERING THROUGH BUILDBASE

Just a year after teaming up with leading builders' merchants Buildbase to offer air tightness and acoustic testing through its 112 branches in England and Wales, Chiltern Dynamics is to expand the range of services offered to include infra-red thermography and SAP calculations/Energy Performance Certificates. Tom Gregory, Head of Energy Services at Chiltern Dynamics said 'following a successful first 12 months we decided to investigate additional energy performance services for buildings that we could deliver through Buildbase and both thermography and energy assessments seemed a natural fit'.

As a result, Buildbase customers can now pop in to their local branch and buy any of these services over the counter. The order is automatically transmitted to Chiltern Dynamics who contact the customer to confirm the details of the property and arrange a date for the work to be undertaken.



DOOR ENERGY RATING FIRST FOR BM TRADA CERTIFICATION

BM TRADA Certification is the first Independent Agency to register products under the British Fenestration Ratings Council (BFRC) Door Energy Rating (DER) scheme for Q-Mark certified doorset fabricator, Door-Stop International.

The scheme covers various types of domestic doors, including single & double external pedestrian doors, French doors and sliding patio doors. BFRC Certified Simulator Mike Chorlton said, 'Achieving a DER can be very straightforward for doorset fabricators, like Door-Stop International, who have obtained BFRC DER reports and who also have a management or factory production control (FPC) system in place. Fabricators who have neither need not panic. Most companies require only a few additional controls to achieve DER.'

While windows and doors can be proven to comply with building regulations with a minimum U-Value - 1.6 (Windows) or 1.8 (Doors, 1.6 in Scotland) - windows can also comply by achieving a WER of 'C' or higher. There is not as yet an alternative compliance method for doors, but it is expected that a compliant door at 1.8 W/m².K will equate broadly to a DER band 'E'.

However as Approved Document L is developed, it seems likely that a minimum DER will be included. Mike said, 'As with windows, many door manufacturers are unlikely to settle for a minimum rating, but will quickly aim to achieve higher ratings.'

For more information email mchorlton@bctrada.com.



WHAT IS THE RESPONSIBLE PERSON RESPONSIBLE FOR?

Chiltern International Fire (CIF) is adding a new regional event to its training calendar for 2012, aimed at the Responsible Person (RP) under the Regulatory Reform (Fire Safety) Order (RRFSO), 'Fire Protection Measures – Understanding Your Responsibilities'.

The aim, according to Senior Consultant Peter Barker, is to raise awareness of passive fire protection (PFP) and the duties placed on the RP. He said, 'A large percentage of persons that would be deemed "responsible" under the RRFSO may not be aware of their responsibilities regarding PFP. Nor may they know their options regarding compliance or showing that they have done everything that is reasonably practicable to comply.'



The morning seminars will encompass presentations by CIF and external speakers, using case studies to demonstrate the role of site surveys in, for example, identifying fire doors and dealing with doors which have been called into question. The benefits of specifying third-party certification will also be covered, along with what a PFP survey should reasonably encompass; what to expect in a fire risk assessment; and maintenance of fire safety provisions. There will be a Q&A workshop at the end.

Peter added, 'Because of the position that typical RPs hold within a company, they may not be able to attend one of our full day training courses. These regional seminars, with a broader approach, can more easily be fitted into their working day.'

Dates and venues will be announced shortly. To register your interest email training@chilternfire.co.uk.



BLANKFORT CARRIES OUT ACOUSTIC TESTING WITH CHILTERN DYNAMICS

Blankfort doors, from Baillargeon of Quebec, have been tested by BM TRADA Group companies since 1995, although Baillargeon's UK technical consultant Bob Williamson has been using the Group testing and consultancy facilities for more than 30 years.

Most recently, Blankfort fire doors have undergone acoustic testing in Chiltern Dynamics' new facility, adding to fire resistance testing with Chiltern International Fire, security testing with Chiltern Dynamics, fire door certification under the BM TRADA Q-Mark scheme and consultancy on specific characteristics of timber with TRADA Technology.'

As Bob Williamson explained, 'It's useful that everything is under one roof. It certainly makes the transfer of information smoother and now that acoustic testing is also offered, it will be perfectly feasible to carry out acoustic, mechanical and ultimately fire resistance testing on exactly the same specimen. In other words, every technical requirement that an internal doorset might have to attain for public or private sector projects can be undertaken with the BM TRADA Group.'

He appreciates the fact that clients are actively encouraged to attend their test. 'No test is ever a failure, even if the outcome is not what you expected. You learn so much about your product by watching the test and discussing performance with the test engineers, sharing their knowledge and experience, in the utmost confidence.'

For more information on acoustic testing email ssmith@chilterndynamics.co.uk.



FIRE PROTECTION IN BUILDINGS EXPLAINED - DATES FOR 2012

'*Fire Protection in Buildings Explained – The Role of Passive Fire Protection Products*' is the new name for the successful Chiltern International Fire (CIF) CPD training course '*Passive Fire Protection Explained*'.

The new name, said Chief Operating Officer Jon Osborn, better reflects the course content, which will not change. 'To help delegates understand the role of passive fire protection strategies and products, we have to paint a wider picture, looking at how fire develops and how Building Regulations address the risks.'

He stressed, 'Feedback has been extremely positive. The course gives clear guidance on the legislative drivers for passive fire protection, such as the Regulatory Reform (Fire Safety) Order. The live fire demonstrations show how quickly fire can gain hold if the correct measures and products are not in place, underlining visually and memorably the key messages we hope delegates will take away.'

Fire Protection in Buildings Explained – The Role of Passive Fire Protection Products will be held at CIF's High Wycombe headquarters on 17th May and 4th October 2012. It is aimed at local authorities, housing associations, building contractors, facilities/estates managers, fire stopping installation companies, electrical & plumbing contractors, architects, building control inspectors and fire engineering students. Delegate fees are £285.00 + VAT (Standard) and £225 + VAT (TRADA members).

Book online at www.chilternfire.co.uk/training.

REACTION TO FIRE: TESTING AND CLASSIFICATION

Chiltern International Fire (CIF) has updated its free Technical Information Sheet TI-0803 *Reaction to Fire: Testing and Classification*.

Reaction to fire (RTF) performance relates to the combustibility and ignitability of a material, i.e. its contribution to fire growth, rather than its ability to resist the passage of fire, which is proved by fire resistance testing.

RTF tests are commonly called up in codes and regulations in both the building and transport sectors. The Technical Information Sheet explains the requirements and process for the Single Flame Ignitability (SFI) and Single Burning Item (SBI) tests.

For your free copy email cif@chilternfire.co.uk.

COMPETITION: £50 JOHN LEWIS VOUCHERS

For your chance to win £50 of John Lewis vouchers, find the missing words in the text below (all text is taken from this issue of our E-News) and then find the answer in the word search. Send your completed word search along with your full contact details to epeters@chilternfire.co.uk to be entered into our prize draw.

One winner will be picked at random. Answers will appear in the Spring 2012 E-News along with the name of the winner. **The deadline for entries is 12pm Friday 23rd December 2011.** The competition winner will be contacted before the 13th January 2012. This competition is not open to employees of the BM TRADA Group. A copy of Competition Rules can be obtained from epeters@chilternfire.co.uk.

1. The Green Deal is a government initiative to make existing buildings more energy efficient and will cover both ----- and commercial buildings.
2. As part of the -- -----, the two companies work closely together and have an obvious synergy.
3. The CPD-certified seminar expanded this year to cover steel, composite and timber ---- -----.
4. The CFBT demo and ----- units are used for teaching students how to control fires within a compartment.
5. Chiltern Dynamics has also run a successful series of free webinars on air ----- testing.
6. As a result, ----- customers can now pop in to their local branch and buy any of these services over the counter.
7. Chiltern International Fire is adding a new regional event to its training calendar for 2012, aimed at the ----- person.
8. Blankfort fire doors have undergone ----- testing in Chiltern Dynamics' new facility.
9. To help delegates understand the role of ----- fire protection strategies and products, we have to paint a wider picture.
10. Chiltern International Fire has updated its free Technical Information Sheet TI-0803 *Reaction to Fire: Testing and -----*.

Y P U J Y N I F E F C N O X
P S R O O D E R I F X O R M
E V I S S A P E I B S I E O
G X V Y Y U U E J N S T S I
O X N Y J J O P K P E A P Z
R C S F G O R H J S N C O C
A I F W G Z G W A B T I N I
T T Z V Y I A B N U H F S T
T S D J G M D Z N A G I I S
A U X B E L A Z Y H I S B E
C O Y Q I H R U H Y T S L M
K C I U A K T X W E E A E O
I A B I C Y M I N Y Y L B D
G A C S B F B D G F W C C C

