

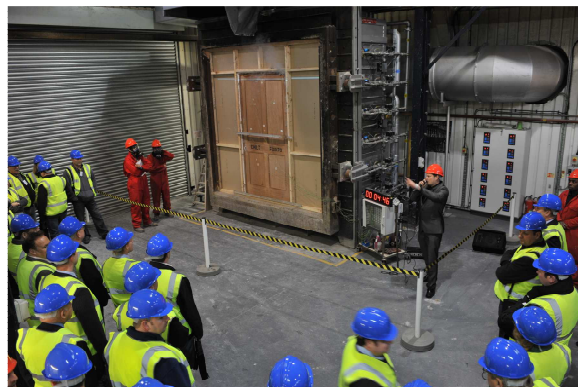
Press Release

12th November 2009

Demand persists for 'Timber Fire Doors Explained'

Chiltern International Fire and sister company BM TRADA Certification have announced the 2010 dates for their 'Timber Fire Doors Explained' training days.

Demand is generated by word of mouth, as delegates often recommend the courses to colleagues and others. The inclusion of a full-scale fire door test is a significant factor in the impact the training day makes on delegates.



Colin Whitehead, Operations Manager, Youngs Doors in Norwich, said, 'To have the function of fire doors explained, and to witness a full scale fire performance test by a UKAS-accredited independent body are vital elements in understanding the benefits of selecting and correctly using fire doors. The dangers and risks of non-compliance speak volumes.'

Dates for 'Timber Fire Doors Explained' in 2010 are: 18th February, 13th May, 23rd September and 11th November. Aimed at fire door manufacturers, installers, property managers, specifiers and approved inspectors, the courses take place at Chiltern International Fire's test laboratory near High Wycombe. Delegate fees will be pegged at 2009 rates: £275 + VAT (TRADA members) and £310 + VAT (non-members).

Ends